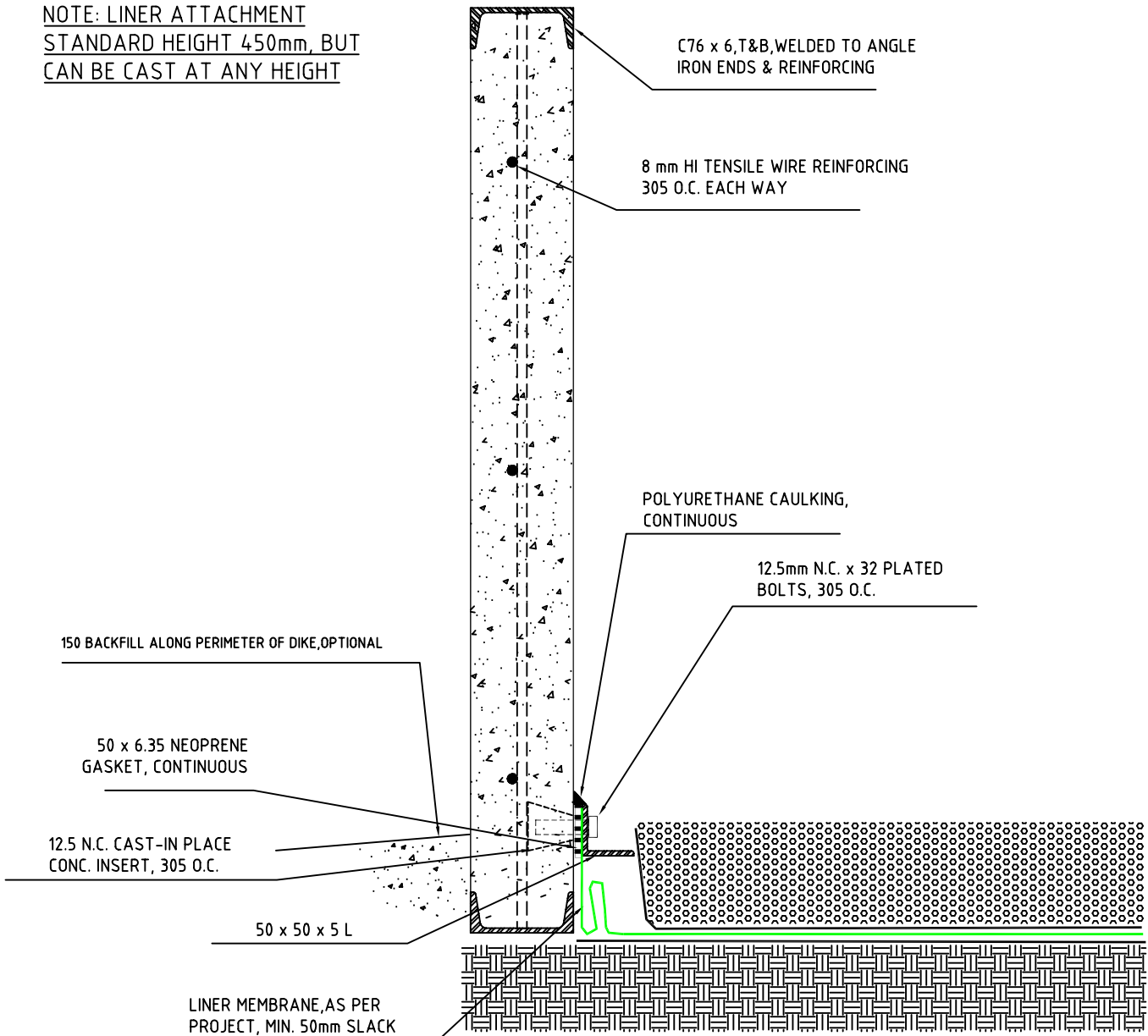


NOTE: LINER ATTACHMENT
STANDARD HEIGHT 450mm, BUT
CAN BE CAST AT ANY HEIGHT



TYPICAL SECTION VIEW

BASE DETAILS: (FROM TOP TO BOTTOM)

- 50 mm OR GREATER, WASHED ROCK OR GRAVEL (BY CLIENT).
- NON-WOVEN GEOTEXTILE & 50 mm OF SAND.
- IMPERVIOUS LINER MEMBRANE.
- NON-WOVEN GEOTEXTILE & 50-100 mm OF SAND
- LEVEL & COMPACT BASE (BY CLIENT).

		MILEPOST MFG. a div. of MILEPOST OILFIELD SERVICES LTD.		JOB#	
Designed by SD	Checked by —	Approved by - date —	Filename LINERATTACH..	Date 06/04/06	Scale N.T.S.
			DIKE & LINER DETAIL		
			Edition 0	Sheet 1/1	