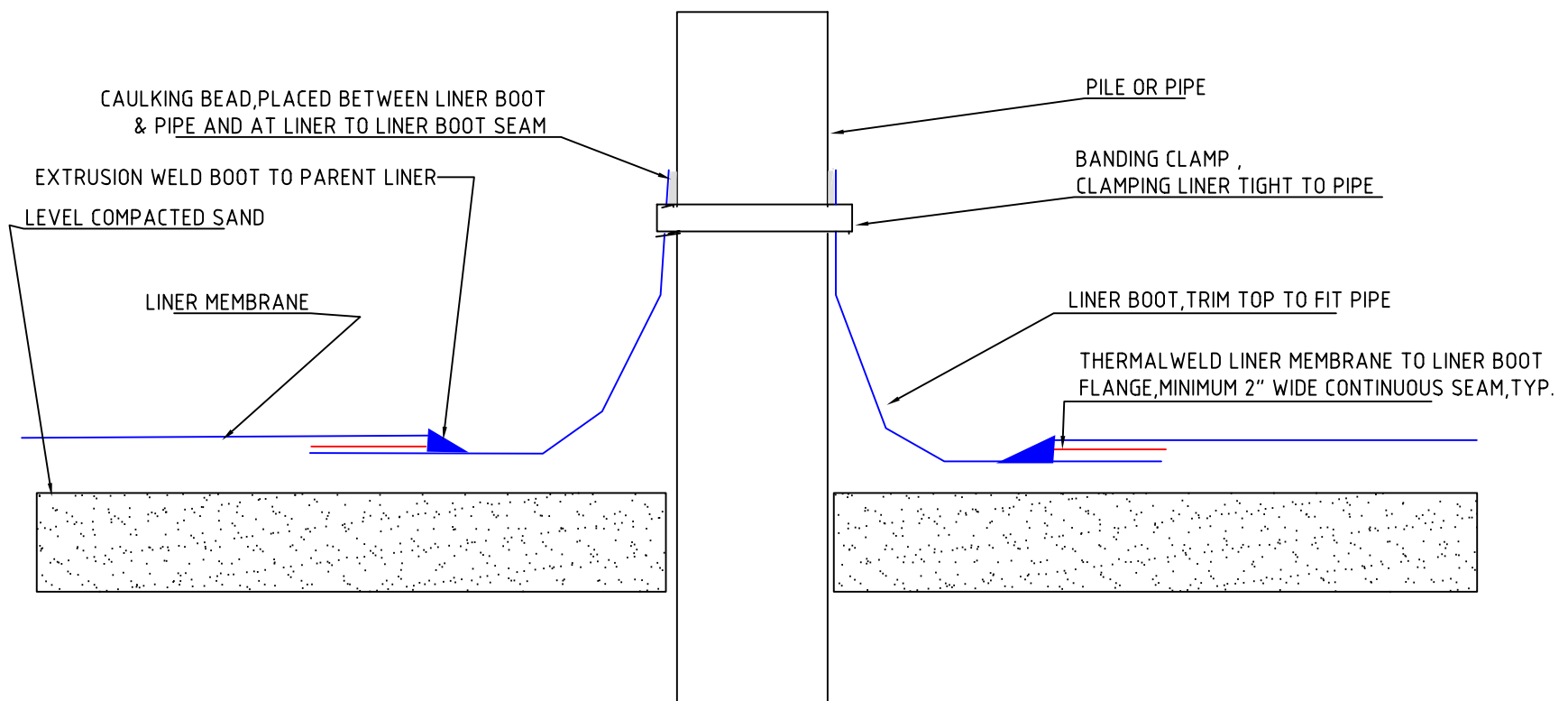


RevNo	Revision note	Date	Signature	Check
-------	---------------	------	-----------	-------



TYPICAL LINER BOOT DETAIL

NOTES:

- 1) BASE AROUND PILE SHALL BE LEVEL & COMPACT.
- 2) LINER & LINER BOOT SHALL BE CLEAN & DRY.
- 3) SUFFICIENT HEAT SHALL BE USED TO FUSE THE SURFACES OF THE LINER BOOT & MEMBRANE. APPLY PRESSURE TO THE HEATED AREA TO ELIMINATE BUBBLES & FOLD.
- 4) EXTRUSION WELD HDPE FILLER ROD CONTINUOUS BETWEEN BOOT FLANGE AND LINER.
- 5) CARE SHALL BE TAKEN TO PREVENT BURN-THROUGH. CHECK WELD FOR DEFICIENCIES & FOR ADEQUATE WELD BOND STRENGTH. VACUUM BOX, PICK AND SHEAR & PEEL TESTS SHALL CONFIRM INTEGRITY.
- 6) PLACE THE BANDING CLAMP AROUND THE LINER BOOT & PIPE. TIGHTEN THE BANDING CLAMP FIRMLY AROUND THE PIPE & BOOT.
- 7) APPLY A BEAD OF CAULKING BETWEEN THE LINER BOOT & PIPE ABOVE THE BANDED BOOT.

		MILEPOST MFG.a div.of MILEPOST OILFIELD SERVICES LTD.		JOB#	
Designed by S.D.	Checked by —	Approved by - date —	Filename LINERBOOT	Date 06/04/06	Scale NTS
			LINER BOOT DETAIL		
			Edition 0	Sheet 1/1	